
4.2 HIGH TEMPERATURE PUMP MAINTENANCE

WARNING: DISASSEMBLING THE VIKING PUMP WILL VOID THE PUMP MANUFACTURER'S WARRANTY AS WELL AS THE MOKON WARRANTY.

DANGER: BEFORE OPENING ANY VIKING PUMP OR LIQUID CHAMBER (PUMPING CHAMBER, RESERVOIR, JACKET, ETC.) BE SURE:

- 1. THAT ANY PRESSURE IN CHAMBER HAS BEEN COMPLETELY VENTED THROUGH SUCTION OR DISCHARGE LINES OR OTHER APPROPRIATE OPENINGS OR CONNECTIONS.**
- 2. THAT THE DRIVING MEANS (MOTOR) HAS BEEN "LOCKED OUT" OR MADE NON-OPERATIONAL SO THAT IT CANNOT BE STARTED WHILE WORK IS BEING DONE ON THE PUMP.**

FAILURE TO FOLLOW THE ABOVE LISTED PRECAUTIONARY MEASURES MAY RESULT IN SERIOUS INJURY.

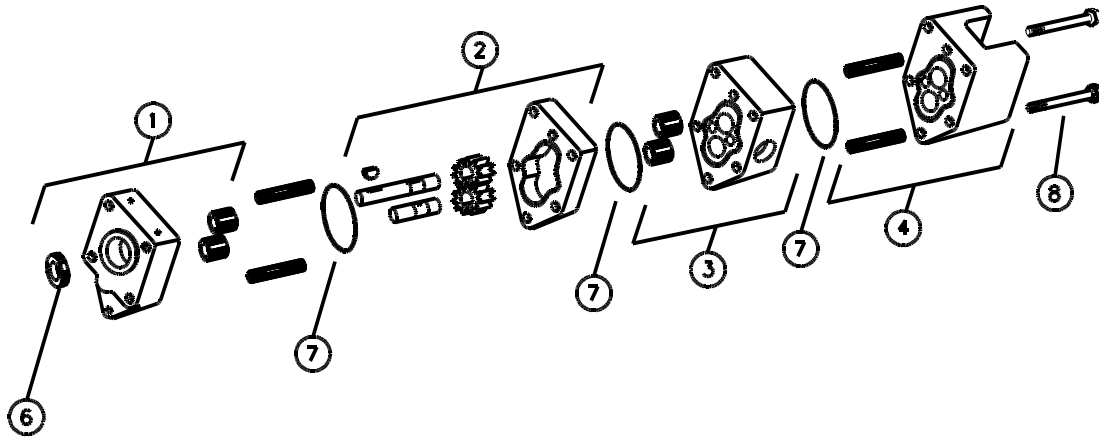
The Viking SG Series pumps are designed for long, trouble-free service life under a wide variety of application conditions with a minimum of maintenance. The following points will help provide long service life.

CLEANING PUMP: Keep pump as clean as possible. This makes inspection, adjustment and repair work easier and helps prevent overlooking a dirt covered grease fitting when lubricating.

PUMP ROTATION: SG series pumps are designed for CLOCKWISE rotation as standard (viewed from shaft end).

STORAGE: If the pump is to be stored or not to be used for six months or so, the pump must be drained and a light coat of non-detergent SAE 30 weight oil must be applied to all internal pump parts. Lubricate fittings and apply grease to the pump shaft extension. Viking suggests rotating the pump shaft by hand, one complete revolution every 30 days to circulate the oil.

4.2 HIGH TEMPERATURE PUMP MAINTENANCE Cont'd



ITEM	DESCRIPTION	ITEM	DESCRIPTION
1	Bracket, lipseal & bearing section	5	Not depicted, Not applicable
2	Match ground casing & (2) gears, driver & driven shafts	6	Model H2 Lipseal 032115 Model H3 Lipseal 032091
3	Separation plate & bearing assembly	7	O-Ring
4	Head and alignment sleeve assembly	8	Assembly capscrews

4.3 PUMP RELIEF VALVE

NOTE: THE PUMP RELIEF VALVE IS NOT TO BE USED AS A PROCESS BYPASS!

There is a pump relief valve on each pumping circuit. The pump relief valve is set at 50 PSI on 350 Series units. When restrictions in the process are such that it will not accept the full pump output at less than the set pressure, this valve opens and maintains full oil flow over heaters, regardless of the flow to the process.

This valve has been factory set and should not require further adjustments. If it is necessary to recalibrate, **CONSULT THE MOKON FACTORY.**

4.4 LOW PRESSURE SAFETY SWITCH

Mokon 350 Series units are equipped with a low pressure safety shut down switch. This switch incorporates an interlock to prevent the operation of the unit should the heat transfer fluid be insufficient. The switch is factory set at 5 PSI and should not be adjusted without **WRITTEN CONSENT FROM THE MOKON FACTORY.**