



PUMP TANKS



Design is the DifferenceSM



Continuous Centralized Process Cooling

Design is the DifferenceSM

Mokon Pump Tanks

Mokon's line of pump tanks reinforces our reputation as a manufacturer of quality circulating liquid temperature control products. Our engineers design each pump tank system to meet your specifications to easily integrate a Mokon central process water chiller, cooling tower or your existing cooling water system.

As with all of Mokon's products, design is the difference. You know you'll always receive the best materials and workmanship available. Our double-welded, stainless steel or epoxy-coated carbon steel pump tanks are designed to stand the test of time. Mokon backs up those advantages with our standard one-year warranty.



250 gallon carbon steel epoxy-coated pump tank with 3 pump configuration (process, recirculating and backup), with butterfly valves on discharge for flow adjustments and NEMA 4 electrical enclosure

- NEMA 12 electrical junction box is wired to pumps/motor with a single point electrical connection and protects electronics against dust and other potentially harmful matter.
- Pump suction legs are angled to prevent vortexing and pump cavitation. This also allows the tank to operate at a lower level, saving water and chemical costs.
- Suction butterfly valve allows pump to be changed without draining the tank.
- Carbon steel reservoir interiors are epoxy-coated to prevent water/metal contact and subsequent corrosion. Stainless steel reservoirs assure long life performance without corrosion.
- Multiple pump sets are equipped with suction manifolds for ease of installation (discharge manifolds optional).
- High-efficiency, close-coupled, non-overloading centrifugal pumps are designed to meet your process and refrigeration requirements for optimal flow and pressure.
- Pump suction and discharge piping trim are sized appropriately, eliminating excessive pressure drop, in turn maximizing flow to process.
- Chiller tanks provided with 1/2" thick insulation to keep tank from sweating (optional on cooling tower tanks).

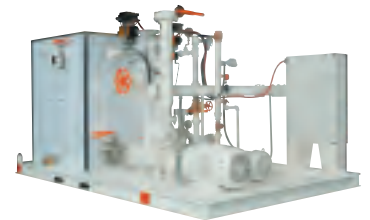


Typical dual compartment carbon steel epoxy-coated tank (stainless steel optional)

- Stainless steel strainers allow removal of debris, preventing damage to equipment.
- Reinforced steel structure deck adds rigidity, increases safety and improves maintenance. Available with slip resistant or diamond plate surface.
- Sight glass with safety rods lets you easily monitor water level and protects sight glass while in operating area. (Includes a ball check to protect tank from emptying in the unlikely case of sight glass breakage.)
- Low pressure and low level shut off switches provided to protect pumps/motors.
- Fill, overflow and dual drain connection provided on all tanks.
- Liquid-filled pressure gauges ensure accurate pressure reading for flow adjustment.
- Reservoirs have double-welded seams for increased leak and corrosion protection.
- Tank covers provided to prevent contamination and evaporation.

Optional items:

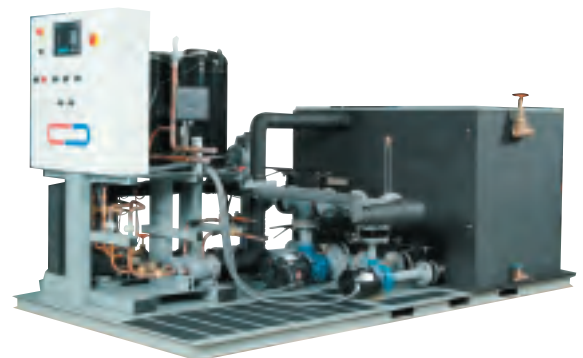
- NEMA 4 or 12 electrical enclosure with switches, buttons, motor starters and controls.
- Cooling tower control available in electrical enclosure for single point interface.
- Discharge check valve to prevent supply line from flow back, eliminating water hammer potential at pump startup, as well as impeller reverse rotation and possible failure.
- High temperature and low flow alarms.
- Full-sized standby pump in 3 pump configuration acts as backup to process and recirculation pumps.
- Make-up valve keeps water level constant, improving efficiency.
- OSHA-approved ladder, rail and toe board available for elevated tanks.



Custom insulated pump tank system with 2 process pumps and customer specified valving, electrical and control configuration



1000 gallon stainless steel insulated chiller pump tank with 3 pump configuration (process, recirculating and backup), showing suction and discharge manifold for ease of plumbing and NEMA 4 electrical enclosure



40 ton central chiller and 500 gallon stainless steel insulated chiller tank, constructed on common baseplate (with slip resistant surface), with 3 pump configuration (process, recirculating and backup), with suction and discharge manifold and NEMA 4 electrical enclosure

Mokon Product Line

Since 1955, Mokon has been recognized as an innovative manufacturer of high performance circulating liquid temperature control systems. The tradition of engineering and construction advances continues to set new standards for durability, accuracy and efficiency for process control applications. Our product line includes:

Water Systems

Each of Mokon's circulating water temperature control systems features non-corrosive components and plumbing for long life and durability. The **Minitherm**, the original compact circulating water temperature control system, provides accurate and dependable control while measuring only one foot tall. Compact and portable, the **Hydrotherm** uses Mokon's unique design philosophy to provide lasting performance. The **Duratherm** also comes with a stainless steel pump and unique canister design that ensures a higher heat transfer rate for more economical operation. With a cast iron pump, the **Duratherm HTP** maximizes performance where high temperatures and high pressures are required. The **Dual Zone Duratherm** provides two independent zones of control from one location. The **Duratherm NPS** gives you accurate temperature control in either a positive or negative pressure mode.

HTF Systems

Mokon offers a complete line of heat transfer fluid systems, providing accurate temperature control of your process up to 600° F. All HTF models are designed with the highest quality components to offer maximum efficiency and long-lasting performance.

Iceman Portable and Central Chillers

The **Iceman Series** includes a complete line of portable air-cooled and water-cooled chillers that provides you with easy and accurate control of your chilled process fluid. Mokon's **Central Chillers** offer a wide variety of air-cooled and water-cooled chillers to keep plant-wide machinery at peak performance temperature. A **Full Range** system is also available for your heating/chilling needs.

Maintenance Products

The **Leak-Master** negative pressure system stops leaks in molds and processes without stopping production. The **D-Scaler** system removes rust, scale and lime deposits from your process. The **ClearFlo** system filters heat transfer fluids without disrupting operation, reducing contamination, and the **ClearFlo PLUS** will also eliminate water build-up within the heat transfer fluid system.

Custom Designed Systems

Not all process applications have the same specifications. In fact, Mokon customers have come to depend on our thermal and fluid dynamic design philosophies to help them meet their unique process requirements. Our custom design system capabilities enable us to provide application solutions with Mokon quality and craftsmanship built in.

Our engineers will develop the Mokon system you need. Whether your application requires special control capabilities, a unique size requirement, specific materials of construction, increased flow or heating capacities or just a special color, Mokon will be happy to work with you to find a solution.

Call Mokon today for more information.



2150 Elmwood Avenue, Buffalo, New York 14207
Phone: 716-876-9951 ■ Fax: 716-874-8048
E-mail: sales@mokon.com

www.mokon.com