



Design is the Difference<sup>SM</sup>

**HTFSystem**  
350 Series

Compact  
Heat Transfer Fluid System

## Continuous Compact Control

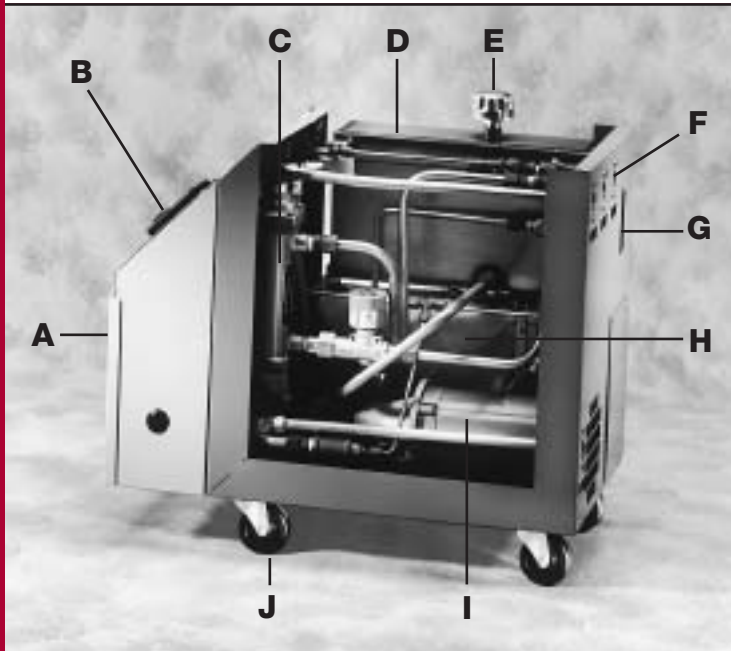
Mokon's Compact HTF 350 Series was designed specifically to offer our customers a compact, safe and affordable means of accurate process temperature control up to 350° F. The small footprint and design of this system are ideal for process applications where space is limited and continuous temperature control is required.

The Compact HTF 350 Series is available in two flow rates, 5 and 10 GPM. Both models offer a choice of three systems to best fit your application needs. The **heating system** provides up to 9 kw of heating capacity, and will heat your process automatically upon demand. The **cooling systems** are sized with heat exchangers to match the amount of heat to be systematically removed from your process. The **heating/cooling system** combines both heating and cooling for total temperature control of your process, where varying demands are common.

All Mokon HTF systems are designed to meet and exceed the SPI Guidelines (Society of the Plastics Industry) for Liquid Circulating Temperature Control Systems and the NFPA 79 (National Fire Protection Association) electrical standards. Systems include motor, heater and transformer fusing, wiring practices to ensure operator safety and auxiliary redundant heater contactor for over temperature safety.

- **Small footprint (compact and portable)**
- **High efficiency gear pump with T.E.F.C. motor**
- **Insulated heater manifold**
- **Low pressure safety shut off**
- **High temperature safety shut off**
- **Built-in pump pressure relief**
- **NEMA 12 electrical enclosure**
- **Glycerin-filled pressure gauge**
- **Microprocessor-based controller**
- **Easy-to-remove cover with powder-coated finish**
- **Meets NFPA 79 standards**
- **Motor, heater and transformer fusing**
- **Door disconnect switch**

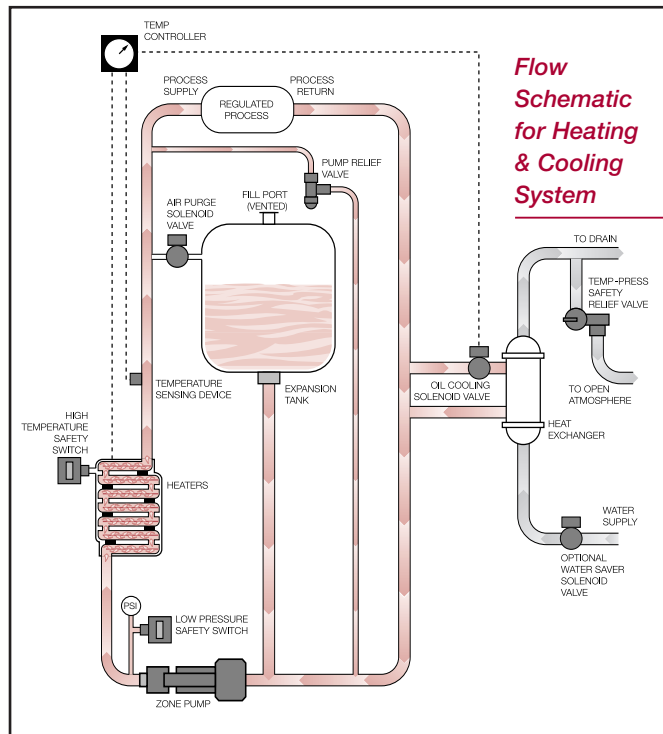
# Continuous Temperature Control



## Standard Features

The Compact HTF 350 Series offers many features as standard to provide accurate temperature control, with durable and safe operation.

- A** NEMA 12 electrical enclosure with disconnect switch
- B** Microprocessor-based controller with indicating lights
- C** Shell and tube heat exchanger
- D** Expansion/Fill tank
- E** Expansion fill port (vented)
- F** Process and cooling water connections
- G** Sight glass
- H** Insulated heaters
- I** Gear pump with T.E.F.C. motor
- J** Heavy-duty ball bearing casters



## Specifications—HTF System-350 Series (up to 350°F)

Flow Rate	System	TEFC Motor (hp)	Cooling Capacity	Heating Capacity (kw)	Total Amps*	Reservoir (expansion) Tank Volume (gallons)	Cabinet Dimensions L x W x H (inches)	Ship Weight (lbs.)
5 GPM	Heating	1/3	—	3 6	4.6 8.3	2.8	28 x 16 x 25	163 168
	Cooling	1/3	1.4 sq. ft. shell & tube heat exchanger	—	—	2.8	28 x 16 x 25	145
	Heating & Cooling	1/3	1.4 sq. ft. shell & tube heat exchanger	3 6	4.6 8.3	2.8	28 x 16 x 25	173 178
10 GPM	Heating	3/4	—	6 9	8.9 12.7	4.7	32 x 17 x 27	210 238
	Cooling	3/4	1.4 sq. ft. shell & tube heat exchanger	—	—	4.7	32 x 17 x 27	211
	Heating & Cooling	3/4	1.4 sq. ft. shell & tube heat exchanger	6 9	8.9 12.7	4.7	32 x 17 x 27	225 253

*Note: \* 460/3/60 (for 230V, double the listed amps)*

*All process connections and water connections are 1/2"*

All Mokon temperature control systems are qualified for service by rigid, simulated field tests, and they are factory calibrated before shipping. With durable materials of construction and reliable components, Mokon offers a one year warranty as standard.

**For more information on Mokon's Compact HTF 350 Series or other products, call our sales department today.**



2150 Elmwood Avenue, Buffalo, New York 14207  
 Phone: 716-876-9951 ■ Fax: 716-874-8048  
 www.mokon.com ■ E-mail: sales@mokon.com