



System

Heat Transfer Fluid System

Continuous Temperature Control

If your process requires elevated temperature control between 100° and 500°F, Mokon's HTF 500 Series ensures continuous process temperature control. Available in two models, 10 or 20 GPM, in single, dual, and triple zone configurations with varying heating capacities to match your process temperature control applications.

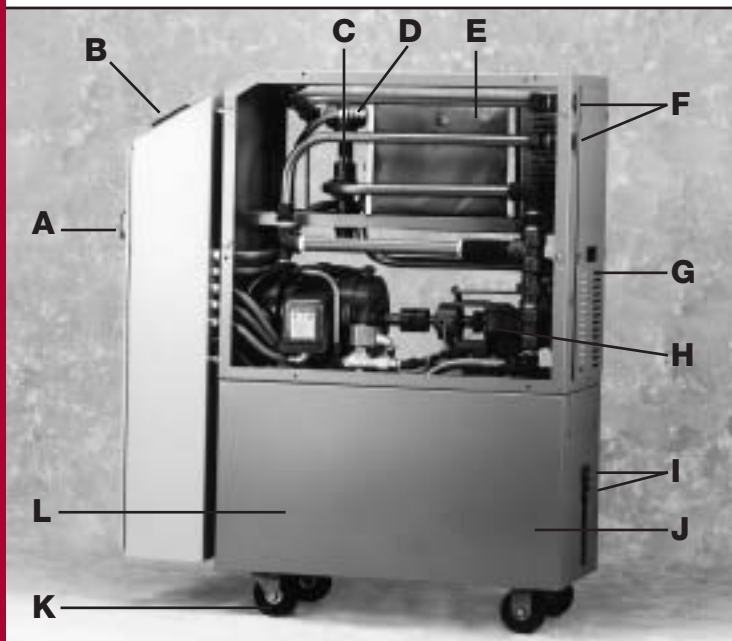
The HTF 500 Series features Mokon's unique heating philosophy and cool oil reservoir design, offering the safest and most efficient means of cooling available.

A self-tuning microprocessor based controller with advanced PID overshoot protection ensures stable, straight-line control for extreme accuracy.

All Mokon HTF systems are designed to meet and exceed the SPI Guidelines (Society of the Plastics Industry) for Liquid Circulating Temperature Control Systems and the NFPA 79 (National Fire Protection Association) electrical standards. Systems include motor, heater, and transformer fusing, wiring practices to ensure operator safety, and auxiliary redundant heater contactor for over temperature safety.

- **Small footprint
(compact & portable)**
- **Sleek, vertical design**
- **Microprocessor based controller**
- **"Continuous Flow"
cool oil reservoir**
- **Insulated heater manifold**
- **Heat exchanger with
recirculating pump**
- **Low pressure and high
temperature safety shut off**
- **Built-in pump pressure relief**
- **NEMA 12 electrical enclosures**
- **Meets NFPA 79 standards**
- **Motor, heater and
transformer fusing**
- **Door Disconnect switch**

Continuous Temperature Control



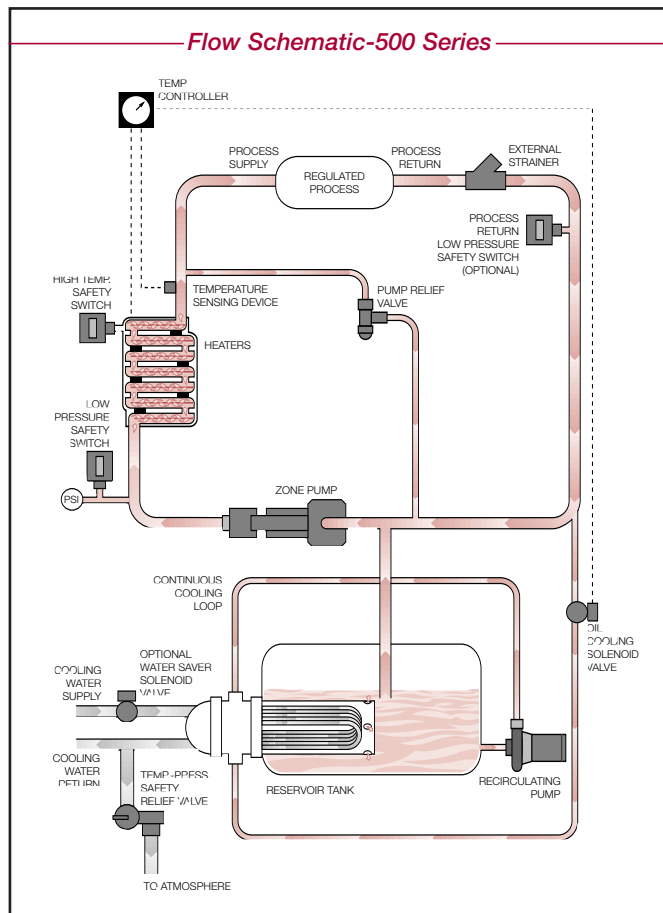
Note: Reservoir sight glass not shown. Easy-to-remove panels removed for photo.

Standard Features

The 500 Series offers many features as standard to provide accurate temperature control, with durable and safe operation.

- A** NEMA 12 electrical enclosures with door disconnect
- B** Microprocessor based controller with indicating lights
- C** Built-in pump pressure relief valve
- D** High temperature safety switch
- E** Insulated heater manifold
- F** Easily accessible process connections
- G** Easy-to-remove heater access panel
- H** Positive displacement pump
- I** Cooling water connections
- J** Powder coated cabinetry
- K** Heavy duty ball bearing casters
- L** "Continuous flow" cool oil reservoir

Specifications—HTF System-500 Series (100°F-500°F)



hp, Flow Rate and Connections	# of Zones	Heating Capacity kw per Zone (total kw)	Total Amps*	Reservoir Tank Volume (gallons)	Cabinet Dimensions L x W x H (inches)	Shipping Weight (lbs)	
1 hp 10 GPM and up to 60 PSI	1	6	9.4	18	41 x 15 x 50	378	
		12	17.0	18	41 x 15 x 50	406	
		18	24.5	18	41 x 15 x 61	456	
		24	32.0	18	41 x 15 x 61	484	
		30	39.5	38	41 x 30 x 51	628	
		36	47.1	38	41 x 30 x 51	656	
	Connections 3/4" process and water	2	6 (12)	18.8	38	41 x 30 x 51	674
			12 (24)	34.0	38	41 x 30 x 51	730
			18 (36)	49.0	38	41 x 30 x 62	822
		3	24 (48)	64.0	38	41 x 30 x 62	878
6 (18)			28.2	58	41 x 45 x 51	970	
12 (36)			51.0	58	41 x 45 x 51	1054	
2 hp 20 GPM and up to 100 PSI	1	18 (54)	73.5	58	41 x 45 x 62	1188	
		24 (72)	96.0	58	41 x 45 x 62	1272	
		6	10.9	18	41 x 15 x 50	432	
		12	18.5	18	41 x 15 x 50	460	
		18	26.0	18	41 x 15 x 61	510	
		24	33.5	18	41 x 15 x 61	538	
	Connections 1" process 3/4" water	2	30	41.0	38	41 x 30 x 51	682
			36	48.6	38	41 x 30 x 51	710
			48	63.6	38	41 x 30 x 62	802
		3	6 (12)	21.8	38	41 x 30 x 51	782
			12 (24)	37.0	38	41 x 30 x 51	838
			18 (36)	52.0	38	41 x 30 x 62	930
	Connections 1" process 3/4" water	2	24 (48)	67.0	38	41 x 30 x 62	986
			30 (60)	82.0	58	41 x 45 x 62	1216
			36 (72)	98.1	58	41 x 45 x 62	1272
3		6 (18)	32.7	58	41 x 45 x 51	1216	
		12 (36)	55.5	58	41 x 45 x 51	1300	
		18 (54)	78.0	58	41 x 45 x 62	1434	
	24 (72)	101.4	58	41 x 45 x 62	1518		

For more information on Mokon's 500 Series or other products, call our sales department today.

* 460/3/60 (for 230V, double the listed Amps) • Standard heat exchanger= 3.6 Sq. Ft. for all HTF Systems



2150 Elmwood Avenue, Buffalo, New York 14207
 Phone 716 / 876-9951 ■ Fax 716 / 874-8048
 www.mokon.com ■ email: sales@mokon.com