



Design is the DifferenceSM

HTFSystem
600 Series

Heat Transfer Fluid System

Continuous High Temperature Control

If your process requires elevated temperature control up to 600° F, Mokon's HTF 600 Series is what you need for continuous high temperature process control. Offered with a pumping capacity of 20 GPM, single, dual, or triple zone configurations, and varying heating capacities, Mokon can match a system to meet your temperature control processing requirements.

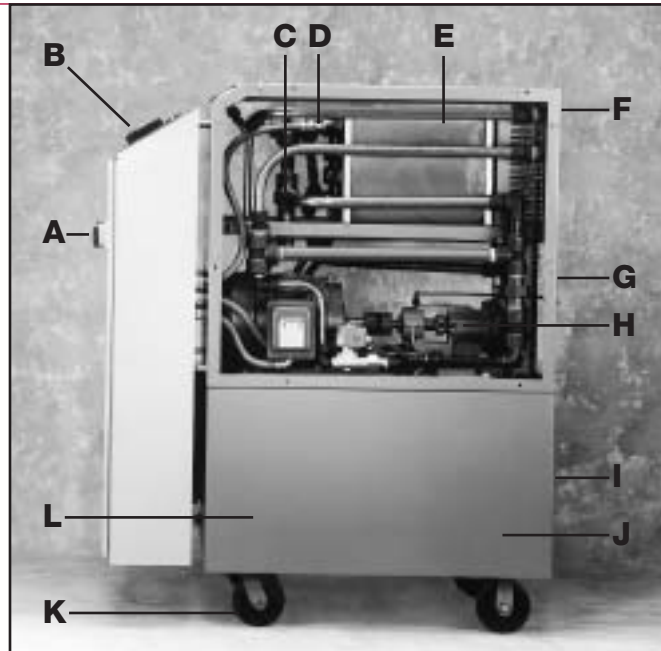
The HTF 600 Series features Mokon's unique heating philosophy and cool oil reservoir design, which offer your process accurate temperature control. These features have been enhanced to improve the efficiency of our systems and lower your cost of operation.

A self-tuning, microprocessor-based controller with advanced PID overshoot protection ensures stable, straight-line control for extreme accuracy.

All Mokon HTF systems are designed to meet and exceed the SPI Guidelines (Society of the Plastics Industry) for Liquid Circulating Temperature Control Systems and the NFPA 79 (National Fire Protection Association) electrical standards. Systems include motor, heater, and transformer fusing, wiring practices to ensure operator safety, and auxiliary redundant heater contactor for over temperature safety.

- **Small footprint (compact and portable)**
- **Sleek, vertical design**
- **"Continuous Flow" cool oil reservoir**
- **Insulated heater manifold**
- **Heat exchanger with supply pump**
- **Low pressure safety shut off**
- **High temperature safety shut off**
- **Built-in pump pressure relief**
- **NEMA 12 electrical enclosure**
- **Glycerin-filled pressure gauge**
- **Microprocessor-based controller**
- **Easy-to-remove panels with powder-coated finish**
- **Meets NFPA 79 standards**
- **Motor, heater and transformer fusing**
- **Door disconnect switch**

Continuous Temperature Control

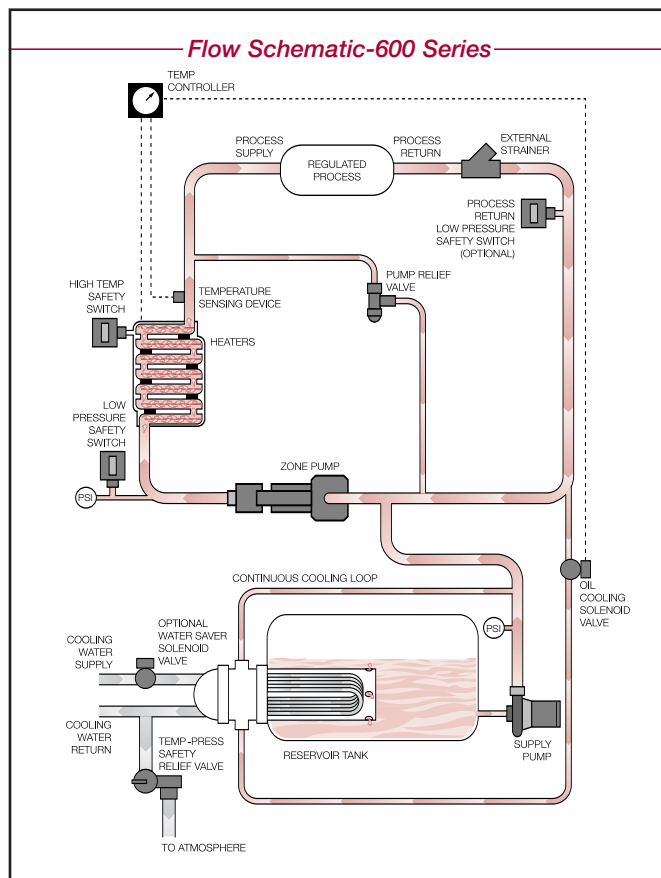


Note: Reservoir sight glass not shown. Easy-to-remove panels removed for photo.

Standard Features

The 600 Series offers many features as standard to provide accurate high temperature control, with durable and safe operation.

- A** NEMA 12 electrical enclosure with disconnect switch
- B** Microprocessor-based controller with indicating lights
- C** Built-in pump pressure relief
- D** High temperature safety switch
- E** Insulated heater manifold
- F** Easily accessible process connections
- G** Easy-to-remove heater access panel
- H** Positive displacement pump
- I** Cooling water connections
- J** Powder-coated cabinetry
- K** Heavy-duty ball bearing casters
- L** "Continuous Flow" cool oil reservoir



Specifications—HTF System-600 Series (100° F-600° F)

hp and Flow Rate	# of Zones	Heating Capacity kw per Zone (total kw)	Total Amps*	Reservoir Tank Volume (gallons)	Cabinet Dimensions L x W x H (inches)	Shipping Weight (lbs.)	
2 hp 20 GPM and up to 100 PSI	1	12	20.1	18	41 x 15 x 50	485	
		18	27.6	18	41 x 15 x 61	535	
		24	35.1	18	41 x 15 x 61	563	
		30	41.9	38	41 x 30 x 51	702	
		36	49.5	38	41 x 30 x 51	730	
		48	64.5	38	41 x 30 x 62	822	
	2	12 (24)	12 (24)	37.9	38	41 x 30 x 51	875
			18 (36)	52.9	38	41 x 30 x 62	965
			24 (48)	67.9	38	41 x 30 x 62	1021
		30 (60)	30 (60)	82.9	58	41 x 45 x 62	1256
			36 (72)	98.1	58	41 x 45 x 62	1312
			48 (96)	127.4	58	41 x 45 x 62	1479

* 460/3/60 (for 230V, double the listed amps) • Standard heat exchanger= 3.6 sq. ft. for all HTF Systems
Connections: 1" process, 3/4" water

All Mokon temperature control systems are qualified for service by rigid, simulated field tests, and they are factory calibrated before shipping. With durable materials of construction and reliable components, Mokon offers a one year warranty as standard.

For more information on Mokon's HTF 600 Series or other products, call our sales department today.



2150 Elmwood Avenue, Buffalo, New York 14207
Phone: 716-876-9951 ■ Fax: 716-874-8048
www.mokon.com ■ E-mail: sales@mokon.com